



# PARK <sup>2020</sup> MODELS

THE PERFECT CHOICE FOR  
QUALITY, AFFORDABLE AND  
SPACIOUS DREAM COTTAGES.



# PARK <sup>2020</sup> MODELS



www.hersheyhomes.com

# Building something better

When you dream of summer vacations and cottage life, it's natural for your minds to wander. You dream of the fresh outdoor breeze, the laughter of friends, the smell of meals cooking in the kitchen. You dream of fires, and fireplaces, and relaxing in the comforts of home. You dream of fishing, or boating, or playing with kids.

When it comes to building your dream cottage, we dream about quality, layouts, and landscapes. We dream about technical improvements, added storage, and colour trends. We dream about building something better. Trust our team of experienced dreamers - together, we can make it happen.

BLACK DIAMOND



Pages 4-11

RESORT



Pages 12-19

MANOR



Pages 20-27

FRONTIER



Pages 28-33

# BLACK DIAMOND SERIES



**Diamond** – Noun  
*Someone or something that is highly valued or admired.*

## Ultra-modern

The Black Diamond Edition cottage is our way of raising the bar and was the industry's inaugural example of contemporary luxury married with cottage lifestyle. Like many other pioneer innovations, it is often imitated, but never duplicated. The striking architecture of these designs is anything but traditional.

### Highlighted Standard Features

- Corian Countertops
- Delta Champagne Faucets and Cabinetry Hardware
- Soft Close Cabinetry Hinges
- Contemporary Matte Finish 2 Tone Cabinetry
- LED Pot Lighting with Dimmer Switches Throughout
- 5 Panel Rockport Interior Doors
- Black Exterior Windows, Doors, Soffit and Fascia



# BLACK DIAMOND SERIES



All Black Diamond Edition park model trailers manufactured by General Coach Canada are constructed in compliance with the stringent standards of the C.S.A. – Z241 Park Model Standard.

## CONSTRUCTION

Heavy Duty 10" Box Steel Chassis with Cross Members, Axles and Detachable Hitch  
Seamless Fibre Mesh Underbelly  
90" Exterior Sidewall Height  
2"x4" Exterior Wall Studding On 16" Centres – R13  
2"x8" Transverse Floor Joists on 16" Centres – R28  
3/4" T&G Plywood Subfloor Glued & Screwed  
Custom Engineered Roof Trusses (Designed Per Unit) – R28  
7/16 OSB Roof Sheathing with 15lb Felt Paper  
30Yr Architectural Fiberglass Shingles with Ice and Water Shield at Perimeter  
10" Vented Soffit Overhang with 2"x6" Fascia Board  
6 Mil Vapour Barrier on Roof and Sidewalls – Sealed at all Outlets  
1/4" OSB Exterior Sheathing with Building Wrap  
5/4 Pressure Treated Decking with 6" Columns on Covered Porch Models

## WINDOWS & DOORS

Black Casement & Awning Vinyl Thermopane Windows – No Grills  
Black Vinyl Thermopane Patio Door – No Grills  
Low E240 Tinting on All Windows & Doors  
Black Insulated Aluminum Exterior Door (34" x 80")  
Black Aluminart 1 1/2" Storm Door with Screen (34" x 80")

## HEATING & COOLING

40,000BTU Forced Air Furnace with Electronic Ignition  
Digital Wall Mount Thermostat – Wired for A/C  
Heat Duct & Registers Within Insulated Floor Cavity  
Prep Only for Basement Air Conditioning Unit

## ELECTRICAL

50AMP Hydro Service with 25' Plug in Cord  
(2) Exterior GFCI Receptacles - @ Patio & Entrance Doors  
(2) Exterior Coach Lights - @ Patio & Entrance Doors  
LED White Rim Pot Lights Throughout  
LED White Contemporary Vanity Light in Bathroom  
LED Undermount Lighting with Valance in Kitchen Overheads  
LED Strip Lighting in MBR Overhead Cabinetry  
(2) USB Combination Outlets in Bedrooms and (1) in Living Room  
Decora Receptacles & Dimmer Light Switches Throughout

## PLUMBING

Uponor Propex – Polyethylene Water Lines  
ABS Drainage / Waste Pipes  
Nautilus On Demand Tankless Water Heater  
Water Heater By-Pass & Low Point Drain

## KITCHEN & APPLIANCES

Stainless Steel 5 CuFt Self Cleaning Gas Range  
Stainless Steel 17 CuFt Refrigerator (Top Freezer)  
Stainless Steel OTR Microwave / Range Hood Combination  
Corian Solid Surface Countertops  
Double Bowl Undermount Stainless Steel Sink – Kitchen  
Champagne Gold Kitchen Faucet w/ Pull Out Spray  
Custom Built Box Style Modular Cabinets  
Matte Finish Cabinet Doors with Soft Close Hidden Hinges  
Matte Finish Drawers  
Satin Bronze Cabinet Door/Drawer Handles

## BATHROOM FIXTURES

Custom Built Box Style Modular Cabinets  
Corian Solid Surface Countertops  
Single Bowl Undermount Stainless Steel Sink  
60" Moulded Fiberglass Tub/ Shower  
Polished Chrome Shower Rod with Curtain  
Polished Chrome Towel Bar & Tissue Holder  
Polished Chrome Towel Rack Above Toilet  
Champagne Gold Tub Faucet And Removable Showerhead w/ Diverter  
Champagne Gold Vanity Faucet  
1.28gal Low Flush Residential Toilet with Insulated Tank  
Selectable 50, 80 or 100 CFM DC Exhaust Fan  
GFCI Receptacle at Vanity  
Medicine Cabinet with Mirror on Door

## BEDROOM ACCESSORIES

Closets w/ Drawers & Aluminum Frame Mirror Doors – MBR  
Drawers Below Bottom Bunk – BD#2 & BD#3  
5" Foam Mattresses on All Bunks  
Powder Coated Railing and Ladder on All Bunks  
Deluxe Overhead Custom Cabinetry with Frosted Glass Doors - MBR

## INTERIOR DÉCOR

Minimum 2"x3" Interior Wall Construction on 16" Centres  
Vinyl Wrapped Drywall Ceiling Throughout  
White 5 Panel Rockport Interior Doors Throughout  
Satin Nickel Lever Knob Hardware Throughout  
Durable Woodgrain Vinyl Flooring Throughout  
White Fabric Sheer Blinds w/ Valance Throughout  
Pre-finished White Wire Shelving/ Closet Rod  
3/4" Door & Window Jambs Throughout  
2 3/4" Crown Molding Throughout  
2 1/4" Door & Window Casing Throughout  
1 7/16" Baseboard in Common Areas  
(3) Cabinet Colour Options Available

## EXTERIOR FINISHES

CanExel Siding with Smart Trim and Metal / Brick Accents  
Colonial Style Shutters – Front End Wall  
Black Aluminum Soffit & Fascia  
Custom Designed Contemporary Roof Lines





**BDE 150-2RT**  
540 SQ.FT.



**BDE 250-2**  
534 SQ.FT.



**BDE 350-2**  
540 SQ.FT.





**BDE 450-2**  
534 SQ.FT.



**BDE 550-2**  
531 SQ.FT.



**BDE 650-3**  
540 SQ.FT.





**BDE 750-3(RT)**  
540 SQ.FT. + 247 SQ.FT.



**BDE 850-2**  
540 SQ.FT.



**BDE 950-3**  
532 + 532 SQ.FT.



**BDE 1100-2**  
536 SQ.FT.



**BDE 1200-2**  
540 SQ.FT.



**BDE 1300-2**  
540 SQ.FT.



# RESORT SERIES



**Resort** – Noun  
*A place for spending time or socializing.*

## LUXURIOUS COMFORT

The Resort series offers an ample collection of floor plans to match your desired lifestyle and expectations. Mixing indulgence with comfort, these open concept layouts encourage both boisterous gatherings and exquisite solitude.

### Highlighted Standard Features

- Stainless Steel Appliances
- LED Pot Lighting
- Laminate Roll Top Countertops
- On Demand Water Heater
- 50 AMP Service
- Horizontal Shade Rollers with Coordinating Window Valances



# RESORT SERIES



All Resort series park model trailers manufactured by General Coach Canada are constructed in compliance with the stringent standards of the C.S.A. – Z241 Park Model Standard.

## CONSTRUCTION

Heavy Duty 10" Box Steel Chassis with Cross Members, Axles and Detachable Hitch  
Seamless Fibre Mesh Underbelly  
90" Exterior Sidewall Height  
2"x4" Exterior Wall Studding On 16" Centres – R12  
2"x8" Transverse Floor Joists on 16" Centres – R21  
3/4" T&G Plywood Subfloor Glued & Screwed  
4/12 Roof Pitch w/ Engineered Roof Trusses – R19  
7/16" OSB Roof Sheathing with 15lb Felt Paper  
30 Year Fiberglass Shingles with Ice and Water Shield at Perimeter  
10" Vented Soffit Overhang w/ 2"x6" Fascia Board  
6 Mil Vapour Barrier on Roof and Sidewalls  
1/4" OSB Exterior Sheathing with Building Wrap  
5/4 Pressure Treated Decking with 6" Columns on Covered Porch Models

## WINDOWS & DOORS

White Single Hung Vinyl Thermopane Windows – Prairie Grills  
Dashwood White (6') Vinyl Thermopane Patio Door – Prairie Grills  
Dashwood Fiberglass Exterior Door w/Decorative Glass (34" x 80")  
Aluminart 1 1/2" Storm Door with Hidden Screen

## HEATING & COOLING

40,000BTU / 60,000BTU Forced Air Gas Furnace with Electronic Ignition (Floorplan Specific)  
Digital Wall Mount Thermostat – Wired for A/C  
Heat Duct & Registers Within Insulated Floor Cavity  
Prep Only for Basement Air Conditioning Unit

## ELECTRICAL

50AMP Hydro Service with 25' Plug in Cord  
(2) Exterior GFCI Receptacles - @ Patio & Main Door  
(2) Exterior Coach Lights - @ Patio & Main Door  
LED Pot Lights Throughout  
LED Hanging Pendant Lighting over Islands and Peninsulas  
LED Vanity Light Bathroom  
LED Strip Lighting in MBR Overhead Cabinetry  
(2) USB Combination Outlets in Bedrooms and (1) in Living Room  
Decora Receptacles & Light Switches Throughout  
Ceiling Fan in Living Room

## PLUMBING

Uponor ProPex – Polyethylene Water Lines  
ABS Drainage / Waste Pipes  
Tankless On-Demand Water Heater (Floorplan Specific)  
Water Heater By-Pass & Low Point Drain

## KITCHEN & APPLIANCES

Stainless Steel 5 CuFt Self Cleaning Gas Range  
Stainless Steel 17 CuFt Refrigerator (Top Freezer)  
Stainless Steel OTR Microwave / Range Hood Combination  
Residential Roll Top Countertops w/ Regency Edge  
Double Compartment Stainless Steel Sink  
Polished Chrome Swing Spout Pulldown Faucet with Magnetic Locking System  
Custom Built Box Style Modular Cabinets  
5 Piece Thermofoil Cabinet Doors with Soft Close Hinges  
5 Piece Thermofoil Drawers with Metal Box Glides  
Satin Nickel Cabinet Door/Drawer Handles

## BATHROOM FIXTURES

Custom Built Modular Cabinet Vanity with Porcelain Sink  
38" Corner Shower Or 54" / 60" Moulded Fiberglass Tub/Shower (Floorplan Specific)  
Polished Chrome Shower Rod with Curtain  
Polished Chrome Towel Bar & Tissue Holder  
Polished Chrome Towel Rack Above Toilet  
Polished Chrome Diverter, Tub Faucet & Shower Head  
Polished Chrome Vanity Faucet  
1.28gal Low Flush Residential Toilet with Insulated Tank  
Selectable 50, 80 or 100 CFM DC Exhaust Fan  
GFCI Receptacle at Vanity  
Medicine Cabinet with Mirror on Door

## BEDROOM ACCESSORIES

Closets w/ Drawers & Mirror Doors – MBR  
Drawers Below Bottom Bunk – BD#2 & BD#3  
5" Foam Mattresses on All Bunks  
Powder Coated Steel Railing and Ladder on All Bunks  
Deluxe Overhead Custom Cabinetry with Frosted Glass Doors - MBR

## INTERIOR DÉCOR

2"x3" Interior Wall Construction on 16" Centres  
Vinyl Wrapped Drywall Ceiling Throughout  
White 2 Panel Interior Doors Throughout  
Satin Nickel Door Knob Hardware Throughout  
Durable Woodgrain Vinyl Flooring Throughout  
Custom Designed Drapery Throughout Unit – "Boxed"  
Horizontal Shade Rollers Throughout Unit with Patio Door Drape  
Pre-finished White Wire Shelving/ Closet Rod  
3/4" Door & Window Jambs Throughout  
2 3/4" Crown Molding Throughout  
2 1/4" Door & Window Casing Throughout  
1 7/16" Baseboard in Common Areas  
(3) Cabinet Colour Options Available  
(5) Interior Décor Packages Available

## EXTERIOR FINISHES

GENTEK D-5 Vinyl Siding – Driftwood Finish  
Colonial Style Shutters – End Walls & Doorside  
White Vinyl Soffit & Aluminum Fascia



**Raymore** - 20 (R4024) 480 SQ.FT. + 480 SQ.FT



**Restortion** - 20 (R4224) 504 SQ.FT. + 504 SQ.FT.



**Rosedale** - 20 (R3914 2BR FL) 540 SQ.FT.



**Riverview** - 20 (R4012 2BR FL) 493 SQ.FT.



**Ridgetown 3** - 20 (R4412 2BR FL) 535 SQ.FT.



**Radisson** - 20 (R4012 1BR FL) 492 SQ.FT.



**Richelieu** - 20 (4113 2BR FK) 533 SQ.FT.



**Riverside** - 20 (R4213) 540 SQ.FT.





**Renous - 20 (P4028) 540 SQ.FT. + 300 SQ.FT.**



**Redstone - 20 (R4213) 540 SQ.FT. + 300 SQ.FT.**



**Remington - 20 (R4013) 525 SQ.FT.**



**Rustico 2 - 20 (R4412 2BR FL) 540 SQ.FT.**



**Rackerby - 20 (4412) 528 SQ.FT.**



**Ramsay - 20 (R3914 1BR) 540 SQ.FT.**



**Ripley - 20 (R4213) 540 SQ.FT.**



**Revelstoke - 20 (R3914 2BR FLD) 538.6 SQ.FT.**



**Ridgeway - 20 (M4013 2BR) 520 SQ.FT. + ??? SQ.FT.**



**Richdale - 20 (R4126) 540 SQ.FT. + 529 SQ.FT.**



**Rikerson - 20 (3914 3BR) 540 SQ.FT. + 240 SQ.FT.**



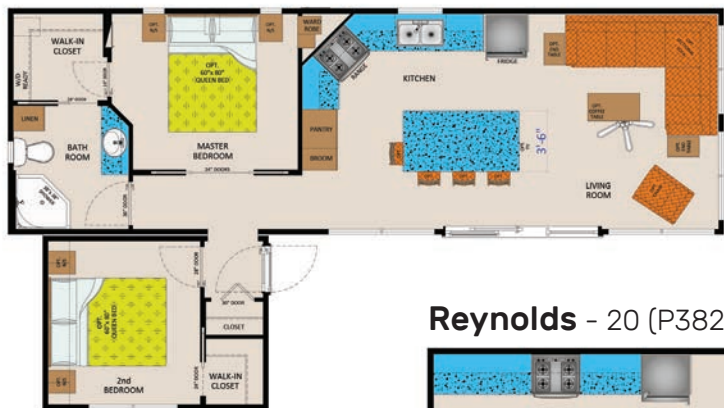
**Rogerville - 20 (P4728) 540 SQ.FT. + 484 SQ.FT.**



**Richan - 20 (3612 2BR FD) 444 SQ.FT. + 216 SQ.FT.**



**Red Deer - 20 (D4113) 536 SQ.FT. + 130 SQ.FT.**



**Rockcliffe - 20 (R4124) 488 SQ.FT. + 240 SQ.FT.**



**Reynolds - 20 (P3828) 992.7 SQ.FT.**



**Rancheria - 20 (M413 3BR) 516 SQ.FT. + 215 SQ.FT.**



**Resolute - 20 (R4124) 492 SQ.FT. + 240 SQ.FT.**



# MANOR SERIES



**Manor** – Noun  
*An impressive residence.*

## RELAX AND ENJOY

The Manor series offers practical living space with a combination of luxury and economy. With an endless list of features and options, we are confident you will find something that satisfies your desire as well as your budget.

### Highlighted Standard Features

- Custom Built Modular Cabinetry Throughout
- Polished Chrome Fixtures
- LED Lighting Package
- White 2 Panel Interior Door
- Black Appliance Package (Fridge, Stove, OTR)



# MANOR SERIES



All Manor series park model trailers manufactured by General Coach Canada are constructed in compliance with the stringent standards of the C.S.A. – Z241 Park Model Standard.

## CONSTRUCTION

Heavy Duty 10" Box Steel Chassis with Cross Members, Axles and Detachable Hitch  
Seamless Fibre Mesh Underbelly  
90" Exterior Sidewall Height  
2"x3" Exterior Wall Studding On 16" Centres – R7  
2"x8" Transverse Floor Joists on 16" Centres – R14  
3/4" T&G Plywood Subfloor Glued & Screwed  
4/12 Roof Pitch w/ Engineered Roof Trusses – R12  
7/16" OSB Roof Sheathing with 15lb Felt Paper and 30 Year Fiberglass Shingles  
10" Vented Soffit Overhang w/ 2"x6" Fascia Board  
6 Mil Vapour Barrier on Roof and Sidewalls  
1/4" OSB Exterior Sheathing with Building Wrap  
5/4 Pressure Treated Decking with 6" Columns on Covered Porch Models

## WINDOWS & DOORS

White Single Hung Vinyl Thermopane Windows – Colonial Grills  
White (6') Vinyl Insulated Thermopane Patio Door – No Grill  
Insulated Aluminum Exterior Door with 9 Lite (32" x 76")  
Aluminum Storm Door with Screen (32" x 76")

## HEATING & COOLING

40,000BTU Forced Air Furnace w/ Electronic Ignition  
Analog Wall Mount Thermostat – Wired for A/C  
Heat Duct & Registers Within Insulated Floor Cavity  
Prep Only for Basement Air Conditioning Unit

## ELECTRICAL

30AMP Hydro Service with 25' Plug in Cord  
(1) Exterior GFCI Receptacle @ Patio Door  
(1) Exterior Coach @ Entrance Door  
LED Track Light w/ (3) Heads in Kitchen  
LED Reading Light @ Each Night Stand  
LED Vanity Light – Bathroom  
LED Hanging Pendant Lighting over Islands and Peninsulas  
LED Flush Mount Pan Lighting Throughout  
(1) USB Combination Outlets in Bunk Room and Living Room  
Decora Receptacles & Light Switches Throughout

## PLUMBING

Uponor Propex – Polyethylene Water Lines  
ABS Drainage / Waste Pipes  
16GAL LP Water Heater with DSI Ignition & Lighted Switch  
Water Heater By-Pass & Low Point Drain

## KITCHEN & APPLIANCES

Black 5 CuFt Gas Range  
Black 17 CuFt Refrigerator (Top Freezer)  
Black OTR Microwave / Range Hood Combination  
Laminate Countertops w/ Snap Edge Finish  
Double Compartment Stainless Steel Sink  
Polished Chrome Single Lever Faucet with 2 Function Pulldown Spray Head  
Custom Built Box Style Modular Cabinets  
Thermofoil Cabinet Doors with Hidden Hinges  
Thermofoil Drawers with Metal Box Glides  
Satin Nickel Cabinet Door Handles

## BATHROOM FIXTURES

Custom Built Modular Cabinet Vanity with Porcelain Sink  
54" or 46" Moulded Fiberglass Tub/Shower (Floorplan Specific)  
Polished Chrome Shower Rod with Curtain  
Polished Chrome Towel Bar & Tissue Holder  
Polished Chrome Towel Rack Above Toilet (Floorplan Specific)  
Polished Chrome Diverter, Tub Faucet & Shower Head  
Polished Chrome Vanity Faucet  
1.28gal Low Flush Residential Toilet with Insulated Tank  
70 CFM Exhaust Fan  
GFCI Receptacle at Vanity  
Medicine Cabinet with Mirror on Door

## BEDROOM ACCESSORIES

Closets with Drawers & Mirror Doors – MBR  
Drawers Below Bottom Bunk – BD#2 & BD#3  
5" Foam Mattresses on All Bunks  
Powder Coated Steel Railing and Ladder on All Bunks

## INTERIOR DÉCOR

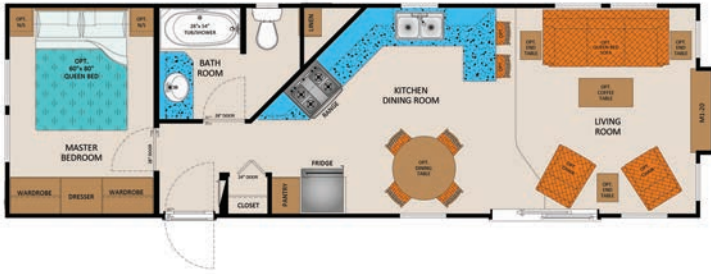
2"x3" Interior Wall Construction on 16" Centres  
Vinyl Wrapped Drywall Ceiling Throughout  
White 2 Panel Interior Doors Throughout  
Satin Nickel Door Knob Hardware Throughout  
Durable Woodgrain Vinyl Flooring Throughout  
Custom Designed Coordinated Drapery Throughout  
Day/ Night Shades Throughout Unit with Patio Door Vertical Blinds  
Pre-finished White Wire Shelving / Closet Rod  
3/4" Door & Window Jambs Throughout  
2 3/4" Crown Molding Throughout  
1 7/16" Door and Window Casing Throughout  
(3) Cabinet Colour Options Available  
(5) Interior Décor Packages Available

## EXTERIOR FINISHES

GENTEK D-5 Vinyl Siding – Driftwood Finish  
Colonial Style Shutters – Front End Wall & Door Side  
White Vinyl Soffit & Aluminum Fascia



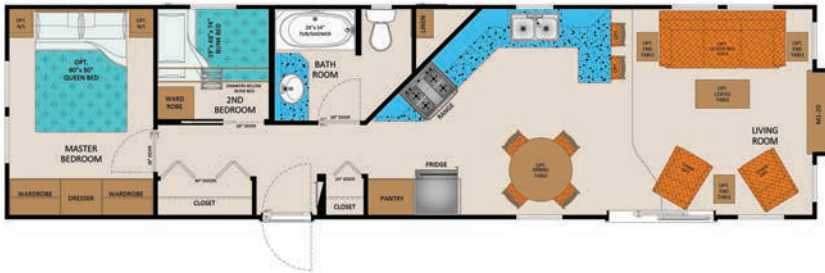
**Millerton - 20 (M3812 1BR FL) 460 SQ.FT.**



**Middleton - 20 (M4212 1BR FL) 515 SQ.FT.**



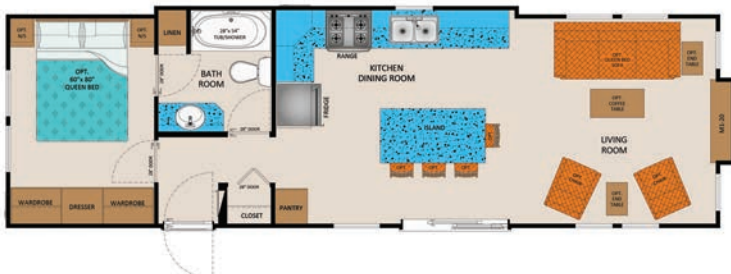
**Millerton 2 - 20 (M4412 2BR FL) 537 SQ.FT.**



**Minniset - 20 (M4113 2BR FK) 537 SQ.FT.**



**Manchester - 20 (M4012 1BR FL) 491 SQ.FT.**



**Melrose - 20 (M3914 2BR FL) 538 SQ.FT.**



**Manchester 2 - 20 (M4512 2BR FL) 539.5 SQ.FT.**



**Maricourt - 20 (M3312 1BR) 399 SQ.FT.**





**Mirabel - 20 (M4113 2BR CK) 540 SQ.FT.**



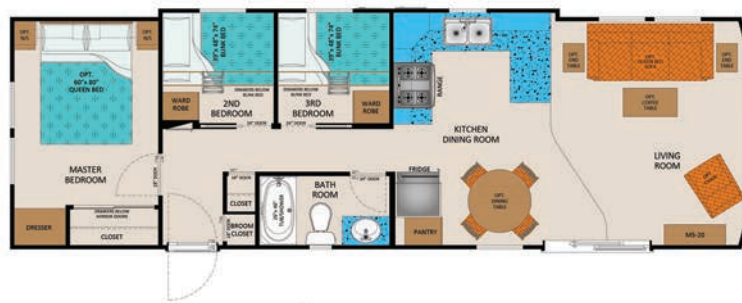
**Melbourne - 20 (M4312 2BR) 534.5 SQ.FT.**



**Maddison 2 - 20 (M3914 3BR CK) 530 SQ.FT.**



**McKellar - 20 (M4113 3BR FL) 539 SQ.FT.**



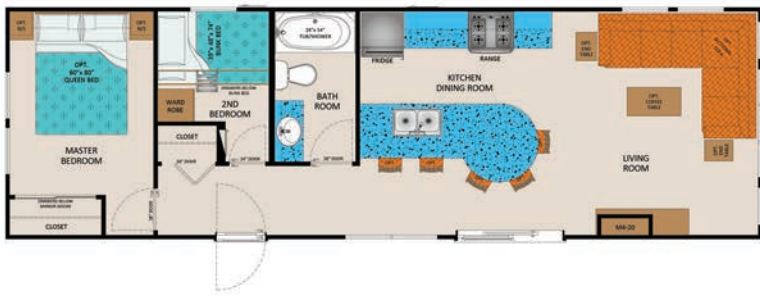
**Milton - 20 (M3914 3BR CK) 530 SQ.FT.**



**Maitland - 20 (M4112 2BR FL) 494 SQ.FT.**



**Marriott - 20 (M4213 2BR) 539 SQ.FT.**



**Martensville - 20 (M4213 2BR) 533 SQ.FT.**



**Minaki - 20 (M4012 2BR) 474 SQ.FT. + 237 SQ.FT.**



**Muskoka - 20 (F3612 2BR FK) 426 SQ.FT. + 213 SQ.FT.**



**Mattawa - 20 (M4012 3BR) 474 SQ.FT. + 237 SQ.FT.**



**Morley - 20 561 SQ.FT. + 273 SQ.FT.**



**Marabella** - 20 (M3914 2BR FL) 538 SQ.FT. + 213 SQ.FT.



**Monaco** - 20 (M4113 3BR FL) 539 SQ.FT. + 296.8 SQ.FT.



**Maidstone** - 20 (F3712 2BR FD) 438 SQ.FT. + 213 SQ.FT.



**Malibu** - 20 (M4113 3BR FL) 539 SQ.FT. + 232.5 SQ.FT.



# FRONTIER SERIES



**Frontier** – Noun  
*Uncharted territory beyond which lies wilderness.*

## Welcome to your cottage

The Frontier series is the most affordable of our cottages. Affordability however, does not have to come with compromise. Explore our trusted layouts and discover the joy of owning your own vacation cottage... your home away from home.

### Highlighted Standard Features

- Vaulted Ceilings
- Fully Furnished with Canadian Made Furniture
- Coordinating Window Valances and New Day-Night Shades
- Custom Coordinated Window Valances
- New White Day-Night Shades Throughout



# FRONTIER SERIES



All Frontier series park model trailers manufactured by General Coach Canada are constructed in compliance with the stringent standards of the C.S.A. – Z241 Park Model Standard.

## CONSTRUCTION

Heavy Duty 10" Box Steel Chassis with Cross Members, Axles and Detachable Hitch  
Seamless Fibre Mesh Underbelly  
90" Sidewall Height  
2"x3" Wall Studding on 16" Centres – R7  
2"x8" Transverse Floor Joists on 16" Centres – R14  
¾" T&G Plywood Subfloor Glued & Screwed  
4/ 12 Roof Pitch w/ Engineered Roof Trusses – R12  
7/16" OSB Roof Sheathing with 15lb Felt Paper and 30 Year Fiberglass Shingles  
10" Vented Soffit with 2"x6" Fascia Board  
6 Mil Vapour Barrier on Roof and Sidewalls  
¼" OSB Exterior Sheathing with Building Wrap

## WINDOWS & DOORS

White Single Hung Thermopane Vinyl Windows Throughout – NO Grills  
White (6') Vinyl Thermopane Patio Door - No Grills  
Insulated Aluminum Exterior Door with 2 LITE Window (32" x 76")  
Aluminum Storm Door with Screen (32" x 76")  
¾" Window and Door Jambs

## HEATING & COOLING

40,000BTU Forced Air LP Furnace with Electronic Ignition  
Analog Wall Mount Thermostat  
Heat Duct & Registers Within Insulated Floor Cavity  
Prep Only for Basement Air Conditioning Unit

## ELECTRICAL

30 Amp Hydro Service with 25' Plug in Cord  
Exterior GFCI Receptacle @ Patio Door  
Exterior Coach Light @ Entrance Door  
LED Flush Mount Pan Lighting Throughout  
(1) USB Combination Outlets in Bunk Room and Living Room  
Decora Style Receptacles & Light Switches Throughout

## PLUMBING

Uponor ProPex – Polyethylene Water Lines  
ABS Drainage / Waste Pipes  
Water Heater By-pass & Low Point Drain  
16GAL LP Water Heater with DSI Ignition & Lighted Switch

## KITCHEN & APPLIANCES

Black 5 CuFt Gas Range  
Black 17 CuFt Refrigerator (Top Freezer)  
Black OTR Microwave / Range Hood Combination  
Laminate Kitchen Counter with T-Edge Finish  
Double Compartment Stainless Steel Sink  
Polished Chrome Single Lever Faucet with Pullout Spray Head  
Custom Built Box Style Modular Cabinetry  
Flat Panel Cabinet Doors with Hidden Hinges  
Flat Panel Drawers with Metal Roller Glides  
Satin Nickel Cabinet / Drawer Pull Bars

## BATHROOM FIXTURES

Custom Built Modular Cabinet Vanity with Porcelain Sink  
54" Moulded Fiberglass Tub/Shower  
Polished Chrome Shower Rod with Curtain  
Polished Chrome Towel Bar & Tissue Holder  
Polished Chrome Diverter, Tub Faucet & Shower Head  
Polished Chrome Vanity Faucet  
1.28gal Low Flush Residential Toilet with Insulated Tank  
70 CFM Exhaust Fan  
GFCI Receptacle at Vanity  
Medicine Cabinet with Mirror on Door

## BEDROOM ACCESSORIES

Built-in Queen Bed w/ Front End Drawers Mattress & Headboard - MBR  
Queen Bedspread, Pillows, Shams & Skirt - MBR  
Bunk Bedspreads, Pillows, and Shams  
Upgraded Overhead Cabinets - MBR  
(2) Modular Night Stands with Open Shelf  
Closets with Bi-Fold Doors - MBR  
Fabric Storage Bins Below Bottom Bunk - BD#2 & BD#3  
5" Foam Mattresses on All Bunks  
Powder Coated Steel Railing and Ladder on All Bunks

## INTERIOR DÉCOR

2"x3" Interior Wall Construction on 16" Centres  
Vinyl Wrapped Drywall Ceiling Throughout  
White 2 Panel Interior Doors Throughout  
Satin Nickel Door Knob Hardware Throughout  
Durable Woodgrain Vinyl Flooring Throughout  
Custom Designed Coordinated Drapery Throughout  
Day/ Night Shades Throughout Unit with Patio Door Vertical Blinds  
Pre-finished White Wire Shelving/ Closet Rod  
¾" Door & Window Jambs Throughout  
2 ¾" Crown Molding Throughout  
1 7/16" Door and Window Casing Throughout  
(3) Cabinet Colour Options Available  
(5) Interior Décor Packages Available

### Additional furniture included (floor plan specific)

Queen Fabric Sofabed / Sectional / Ottoman / Fabric Arm Chair(s)  
(2) End Tables & Coffee Table / Dinette Table with (4) Seat Chairs / Bar Stools

## EXTERIOR FINISHES

GENTEK D-5 Vinyl Siding – Driftwood Finish  
Colonial Style Shutters – Front End Wall  
White Vinyl Soffit & Aluminum Fascia



**Fredericton - 20 (F3812 2BR CK) 450 SQ.FT.**



**Fontrose - 20 (F3714 2BR CK) 540 SQ.FT.**



**Forester - 20 (F3612 2BR CD) 426 SQ.FT. + 213 SQ.FT.**



**Fonhill - 20 (F3714 2BR CK) 502 SQ.FT.**



**Fenwick - 20 (F3812 2BR F) 454 SQ.FT.**



**Florence - 20 (F3714 3BR CK) 502 SQ.FT.**





**Freemont - 20 (F3812 BR CK) 450 SQ.FT.**



**Ferrensby - 20 (F4012 2BR) 467 SQ.FT.**

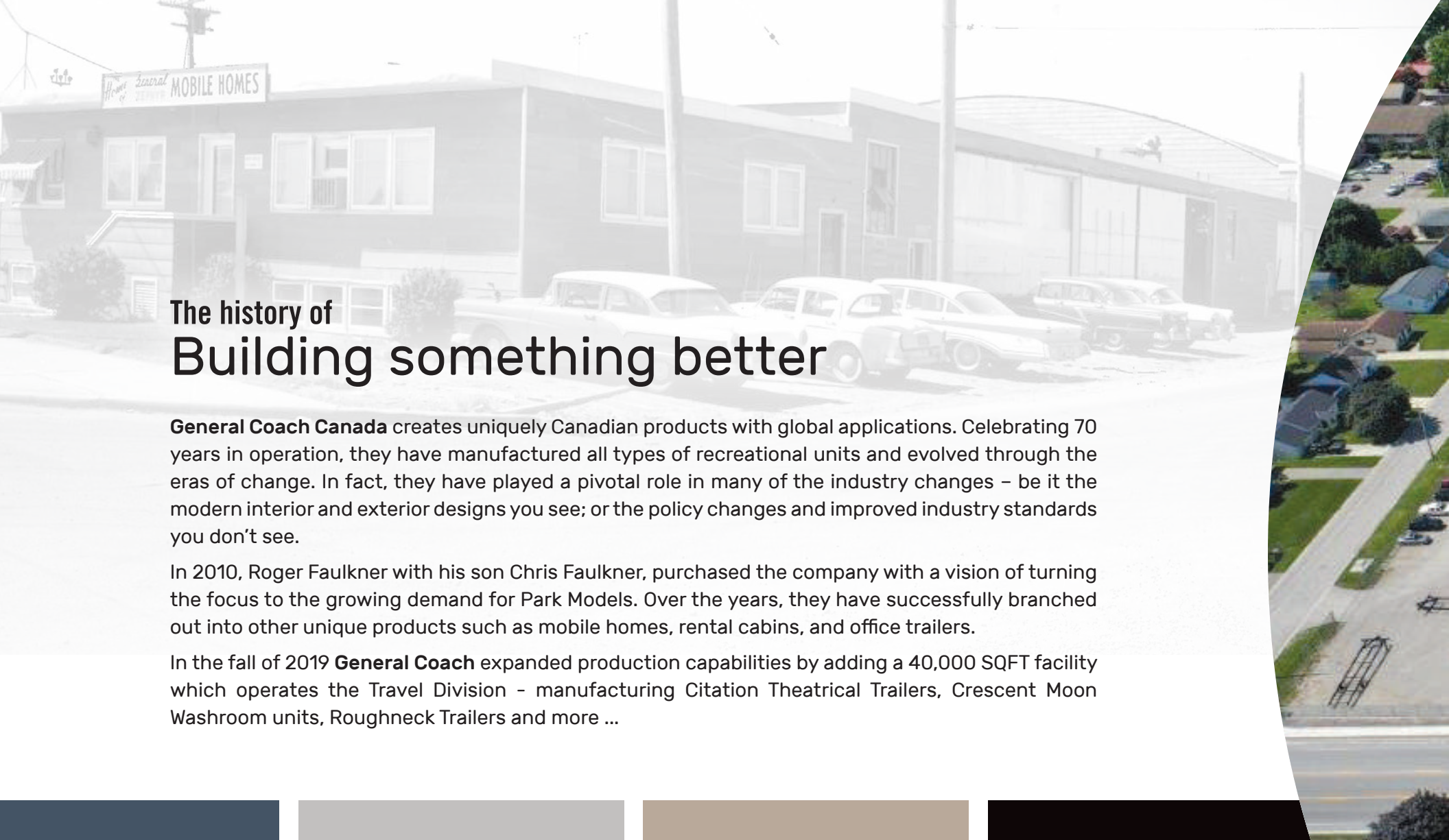


**Freedom 2 - 20 (F3812 2BR CK) 450 SQ.FT.**



**Freedom 3 - 20 (F3812 3BR CK) 450 SQ.FT.**





## The history of Building something better

**General Coach Canada** creates uniquely Canadian products with global applications. Celebrating 70 years in operation, they have manufactured all types of recreational units and evolved through the eras of change. In fact, they have played a pivotal role in many of the industry changes – be it the modern interior and exterior designs you see; or the policy changes and improved industry standards you don't see.

In 2010, Roger Faulkner with his son Chris Faulkner, purchased the company with a vision of turning the focus to the growing demand for Park Models. Over the years, they have successfully branched out into other unique products such as mobile homes, rental cabins, and office trailers.

In the fall of 2019 **General Coach** expanded production capabilities by adding a 40,000 SQFT facility which operates the Travel Division – manufacturing Citation Theatrical Trailers, Crescent Moon Washroom units, Roughneck Trailers and more ...

### General Coach Canada Warranty

1-year product warranty, factory to consumer via dealer.

5-year limited warranty for components and performance relating to structural integrity, weather penetration, electrical distribution system, plumbing and heating delivery systems, window and door performance.



All Park Models manufactured by General Coach Canada are constructed in compliance with the strict standards of the C.S.A. -Z241 Park Model Standard.

The manufacturer reserves the right to improve or modify the product, without notice or obligation, which may change materials, equipment, specifications or designs. Information contained herein is from the latest data available at the time of printing. Photographs and descriptions may contain some optional extras.



**Build Something Better**

[GENERALCOACHCANADA.COM](http://GENERALCOACHCANADA.COM)



## Corporate Headquarters

73 Mill Street, Hensall, Ontario N0M 1X0

855.262.2600

info@generalcoachcanada.com

www.generalcoachcanada.com

Associate Members of



General Coach Canada reserves the right to improve or modify the product, which may change specifications, designs or prices. Information contained in this brochure is current at the time of printing. Photographs and descriptions may contain some standard features and some optional extras. Some options may only be available on a pre-production basis. All specifications are approximate. Not all available options are listed.

Printed in Canada